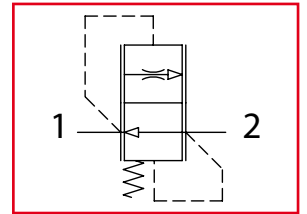




VCC380

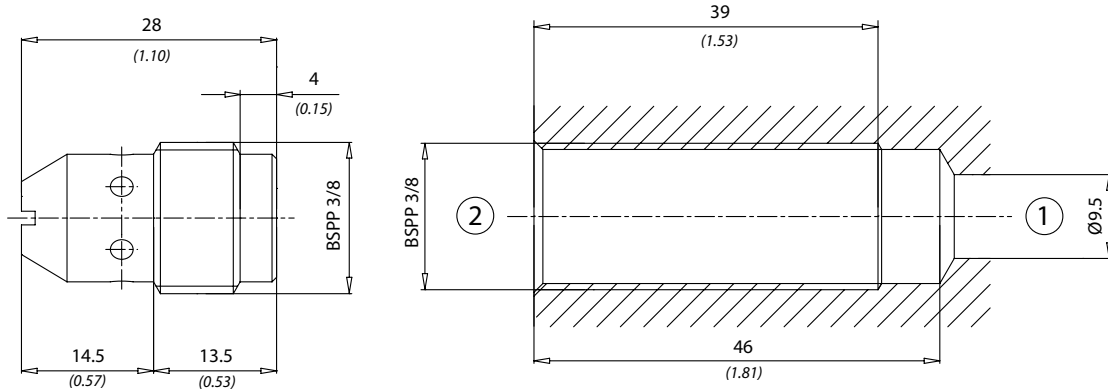
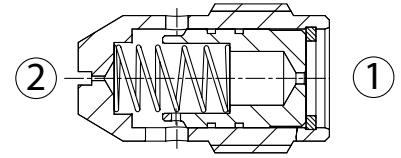
Valvole controllo discesa compensate fisse
Fixed compensated load control valves



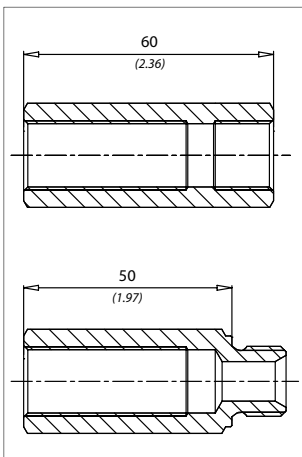
LEHENGOMAK, S. P.A.



Dati tecnici Technical data	
Viscosità fluido Fluid viscosity	10-500 mm ² /s 45 to 2000 ssu (6 to 420 cSt)
Classe di contaminazione Filtration	ISO code 16/13 SAE class 4 or better
Temperatura fluido Fluid temperature	-20°C +80°C -4°F +176°F
Temperatura ambiente Ambient temperature	-20°C +50°C -4°F +122°F

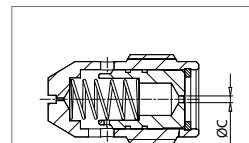


mm
(Inches)



Codice / Code
61100161

Codice / Code
61100162



Codice Code	Ø C
VCC3801	Ø 0,6 (Ø 0.023)
VCC3802	Ø 1,1 (Ø 0.043)
VCC3803	Ø 1,5 (Ø 0.059)
VCC3804	Ø 2 (Ø 0.078)
VCC3805	Ø 2,2 (Ø 0.086)
VCC3806	Ø 2,5 (Ø 0.098)
VCC3807	Ø 2,7 (Ø 0.106)
VCC3808	Ø 2,9 (Ø 0.114)
VCC3809	Ø 3 (Ø 0.118)
VCC38010	Ø 3,5 (Ø 0.137)
VCC38011	Ø 3,6 (Ø 0.141)
VCC38012	Ø 4 (Ø 0.157)
VCC38016	Ø 5 (Ø 0.196)
VCC38018	Ø 5,5 (Ø 0.216)

Codice ordinazione Ordering code	
VCC380 - Y	
Y	Portata controllata a 100 bar ± 10% Controlled flow at 100 bar ± 10%
1	1 l/min (0.25 USgpm)
2	2 l/min (0.5 USgpm)
3	3 l/min (0.75 USgpm)
4	4 l/min (1 USgpm)
5	5 l/min (1.25 USgpm)
6	6 l/min (1.5 USgpm)
7	7 l/min (1.75 USgpm)
8	8 l/min (2 USgpm)
9	9 l/min (2.25 USgpm)
10	10 l/min (2.5 USgpm)
11	11 l/min (2.75 USgpm)
12	12 l/min (3 USgpm)
16	16 l/min (4.25 USgpm)
18	18 l/min (4.75 USgpm)

Caratteristiche tecniche Technical performances				
Codice Code	Portata Max Max flow l/min - USgpm	Pressione Max Max pressure bar/PSI	Peso approssimativo Approx weight Kg / lb	Coppia di serraggio (Nm) Tightening torque (lbt ft)
VCC380	18 (5)	250 (3600)	0,022 (0.05)	6 (4.5)